

Biotinylated Human PLAU/uPA Protein (active form)

Cat. No. PLA-HM401B

Description

Source	Recombinant Biotinylated Human PLAU/uPA Protein (active form) is expressed from HEK293 with His tag and Avi tag at the C-Terminus.
Accession	P00749-1
Molecular Weight	The protein has a predicted MW of 49.3 kDa. Due to protein lysis and glycosylation, the protein migrates to 24-26 kDa(long chain A), 35-38 kDa(chain B) and 52-60 kDa(long chain A&chain B) based on Bis-Tris PAGE result.
Endotoxin	Less than 1EU per ug by the LAL method.
Purity	> 95% as determined by Bis-Tris PAGE > 95% as determined by HPLC

Formulation and Storage

Formulation	Lyophilized from 0.22µm filtered solution in PBS (pH 7.4). Normally 8% trehalose is added as protectant before lyophilization.
Reconstitution	Centrifuge the tube before opening. Reconstituting to a concentration more than 100 µg/ml is recommended. Dissolve the lyophilized protein in distilled water.
Storage	-20 to -80°C for 12 months as supplied from date of receipt. -80°C for 3 months after reconstitution. 2-8°C for 2-7 days after reconstitution. Recommend to aliquot the protein into smaller quantities for optimal storage. Please minimize freeze-thaw cycles.

Background

Plasminogen activator, urokinase (uPA) is a secreted serine protease whose Dysregulation is often accompanied by various cancers. PLAU inhibition could suppress tumor growth. Collectively, PLAU is necessary for tumor progression and can be a diagnostic and prognostic biomarker in HNSCC.

Assay Data

Bis-Tris PAGE



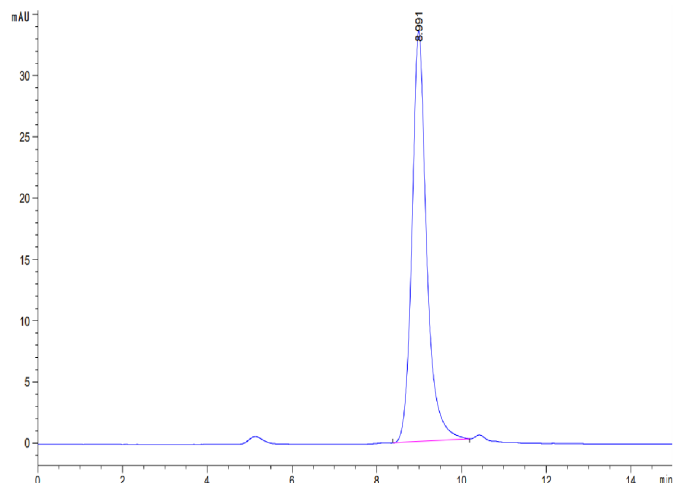
Biotinylated Human PLAU on Bis-Tris PAGE under reduced condition. The purity is greater than 95%.

SEC-HPLC

Biotinylated Human PLAU/uPA Protein (active form)

Cat. No. PLA-HM401B

Assay Data

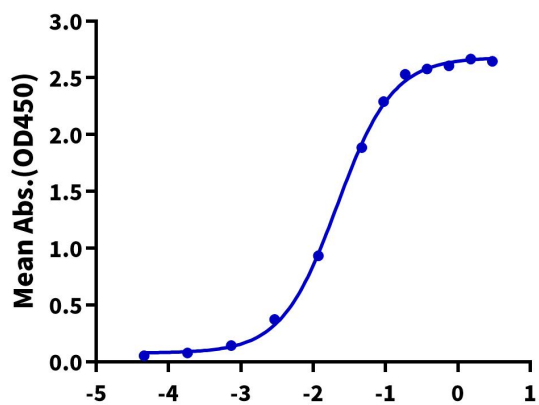


The purity of Biotinylated Human PLAU is greater than 95% as determined by SEC-HPLC.

ELISA Data

Biotinylated Human PLAU, His Tag ELISA

0.1 μ g Human uPAR, hFc Tag Per Well



Immobilized Human uPAR, hFc Tag at 1 μ g/ml (100 μ l/well) on the plate. Dose response curve for Biotinylated Human PLAU, His Tag with the EC50 of 21.5ng/ml determined by ELISA (QC Test).